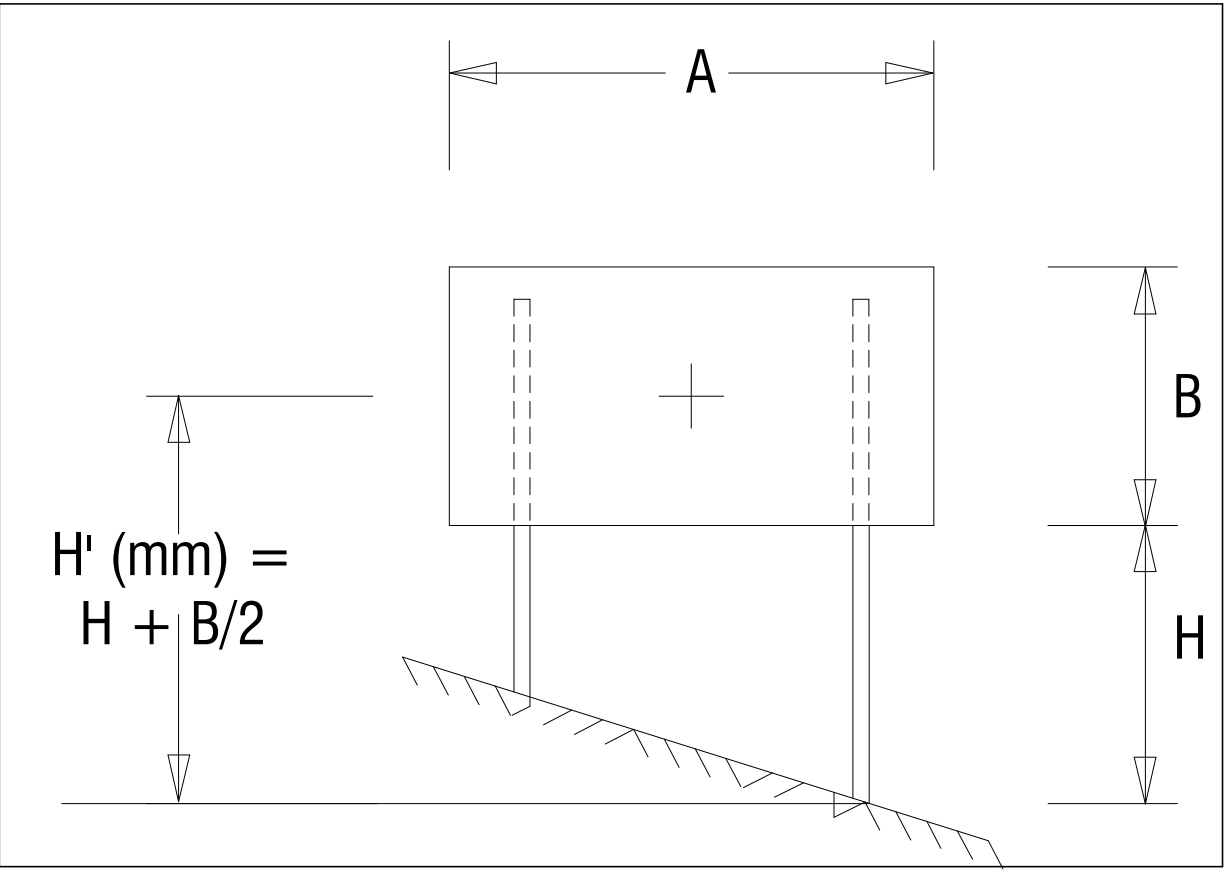


CHART NZ2.1 OPTIMAST POSTS - REGION NZ2: SIGN AREA (A x B) < 10m²

NOTES

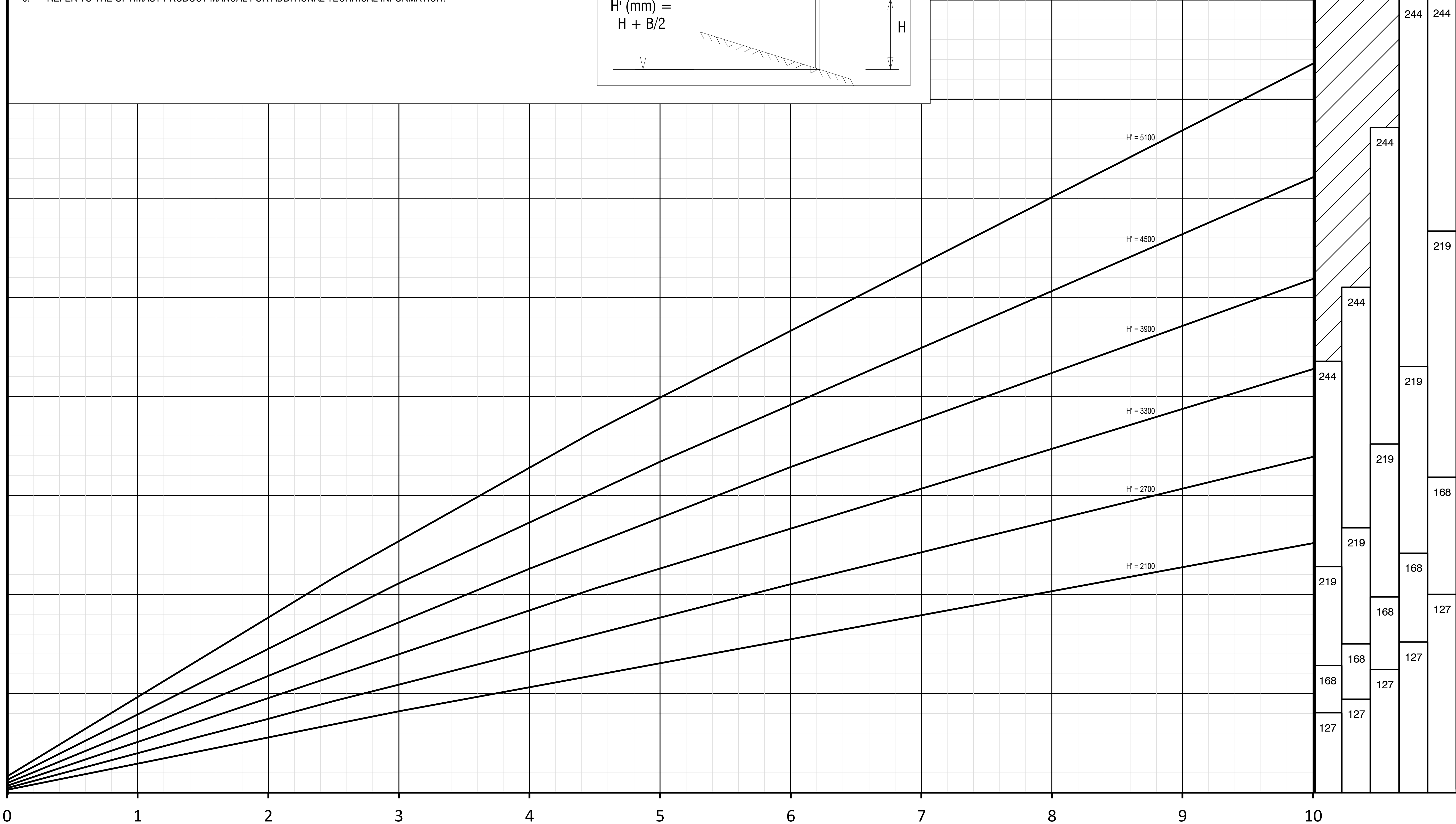
- 1. ON UNEVEN GROUND H = HEIGHT OF THE TALLEST POST.
- 2. CHARTS ARE BASED ON EXPOSED LOCATIONS SUCH AS OPEN GRASSLAND, ISOLATED TREES (AS1170.2 TERRAIN CATEGORY 2) AND DESIGNED FOR IMPORTANCE LEVEL 2. DESIGN LIFE IS 25 YEARS.
- 3. CHARTS ASSUME THAT DIMENSION 'A' IS NO MORE THAN FIVE (5) TIMES DIMENSION "B". IF A IS GREATER THAN 5xB CONTACT SUPPLIER FOR DESIGN ADVICE.
- 4. WHERE SIGNAGE ASSEMBLIES ARE TO COMPLY WITH THE APPROVED TECHNICAL CONDITIONS OF USE FOR FRANGIBILITY, THE SIGN GEOMETRY IS TO COMPLY WITH THE FOLLOWING MINIMUM POST HEIGHTS (H+B): OPTIMAST 127 = 2.4m, OPTIMAST 168/OPTIMAST 219/OPTIMAST 244 = 4.6m
- 5. SINGLE POST SIGN SUPPORTS MUST ONLY BE USED WHERE THE SIGN ATTACHMENT RESISTS ROTATION AND IS IN ACCORDANCE WITH STATE AUTHORITY GUIDELINES.
- 6. REFER TO THE OPTIMAST PRODUCT MANUAL FOR ADDITIONAL TECHNICAL INFORMATION.



OPTIMAST POSTS

No. OF POSTS

1 2 3 4 5



SIGN AREA (A x B)m²

CHART NZ2.2 OPTIMAST POSTS - REGION NZ2: SIGN AREA (A x B) < 28m²

NOTES

1. ON UNEVEN GROUND H = HEIGHT OF THE TALLEST POST.

2. CHARTS ARE BASED ON EXPOSED LOCATIONS SUCH AS OPEN GRASSLAND, ISOLATED TREES (AS1170.2 TERRAIN CATEGORY 2) AND DESIGNED FOR IMPORTANCE LEVEL 2. DESIGN LIFE IS 25 YEARS.

3. CHARTS ASSUME THAT DIMENSION 'A' IS NO MORE THAN FIVE (5) TIMES DIMENSION "B". IF A IS GREATER THAN 5xB CONTACT SUPPLIER FOR DESIGN ADVICE.

4. WHERE SIGNAGE ASSEMBLIES ARE TO COMPLY WITH THE APPROVED TECHNICAL CONDITIONS OF USE FOR FRANGIBILITY, THE SIGN GEOMETRY IS TO COMPLY WITH THE FOLLOWING MINIMUM POST HEIGHTS (H+B): OPTIMAST 127 = 2.4m, OPTIMAST 168/OPTIMAST 219/OPTIMAST 244 = 4.6m
5. SINGLE POST SIGN SUPPORTS MUST ONLY BE USED WHERE THE SIGN ATTACHMENT RESISTS ROTATION AND IS IN ACCORDANCE WITH STATE AUTHORITY GUIDELINES.

6. REFER TO THE OPTIMAST PRODUCT MANUAL FOR ADDITIONAL TECHNICAL INFORMATION.

OPTIMAST POSTS

No. OF POSTS

1	2	3	4	5
---	---	---	---	---

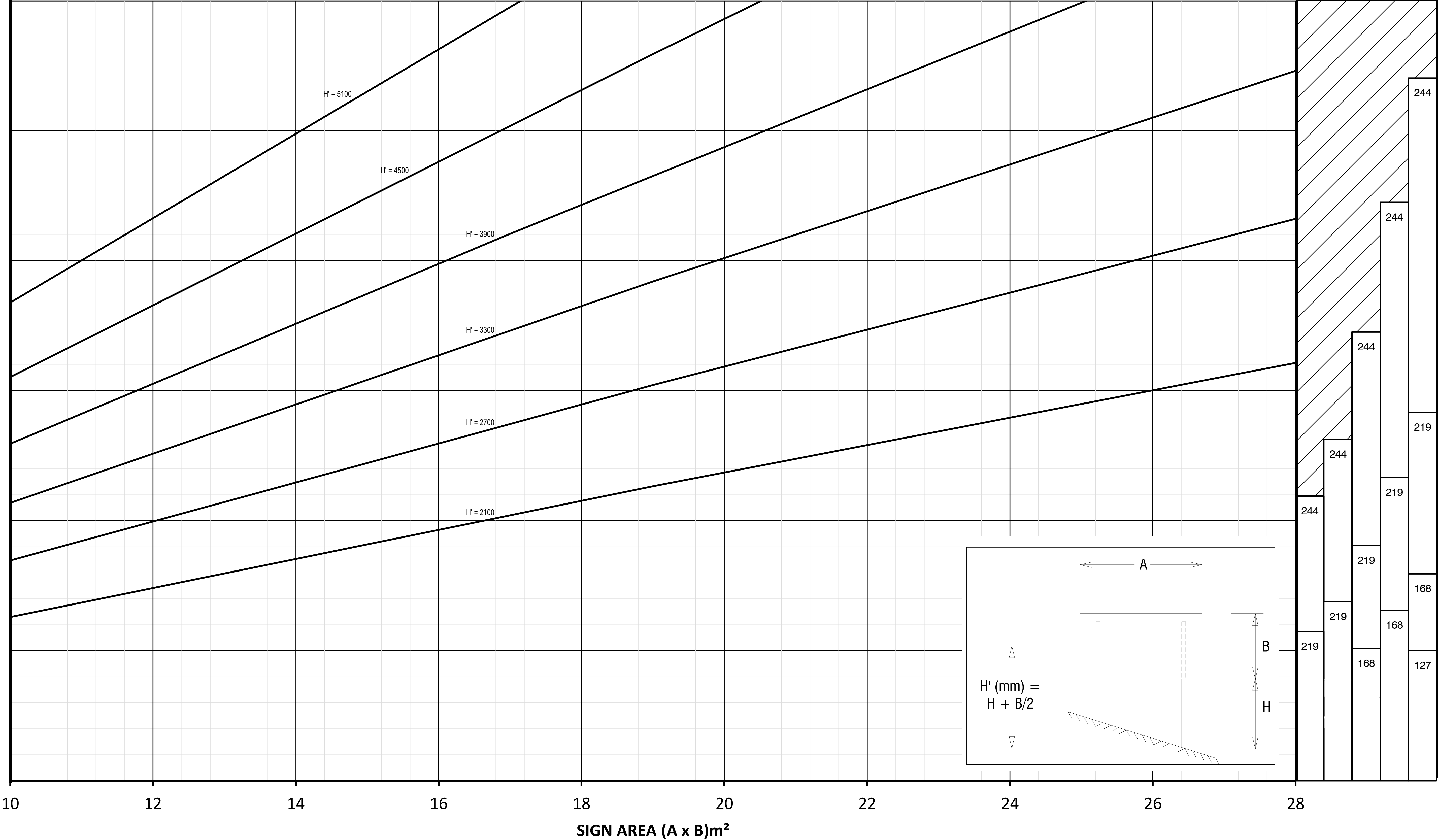


CHART NZ2.3 OPTIMAST POSTS - REGION NZ2: SIGN AREA (A x B) < 40m²

NOTES

1. ON UNEVEN GROUND H = HEIGHT OF THE TALLEST POST.

2. CHARTS ARE BASED ON EXPOSED LOCATIONS SUCH AS OPEN GRASSLAND, ISOLATED TREES (AS1170.2 TERRAIN CATEGORY 2) AND DESIGNED FOR IMPORTANCE LEVEL 2. DESIGN LIFE IS 25 YEARS.

3. CHARTS ASSUME THAT DIMENSION 'A' IS NO MORE THAN FIVE (5) TIMES DIMENSION "B". IF A IS GREATER THAN 5xB CONTACT SUPPLIER FOR DESIGN ADVICE.

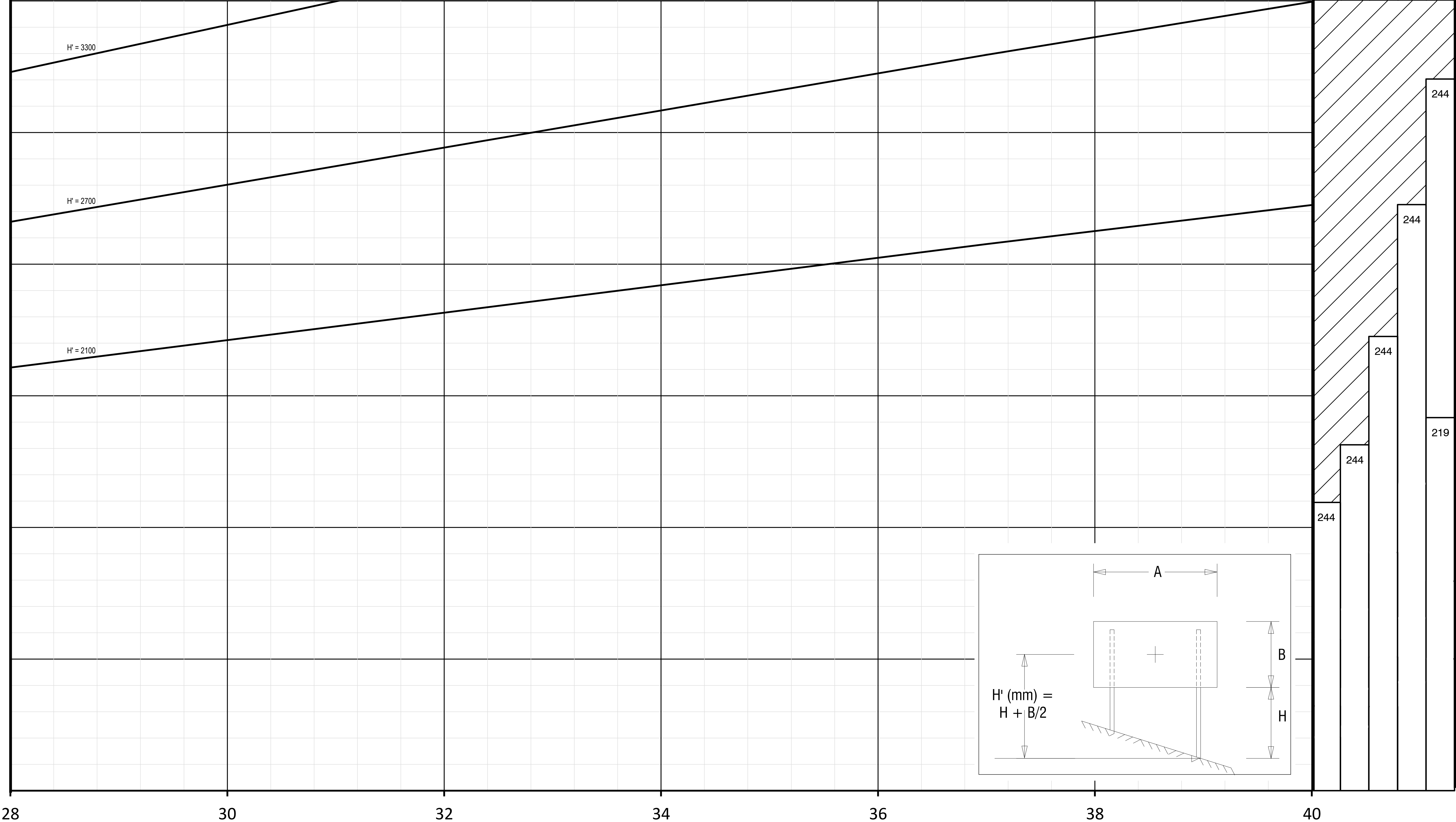
4. WHERE SIGNAGE ASSEMBLIES ARE TO COMPLY WITH THE APPROVED TECHNICAL CONDITIONS OF USE FOR FRANGIBILITY, THE SIGN GEOMETRY IS TO COMPLY WITH THE FOLLOWING MINIMUM POST HEIGHTS (H+B): OPTIMAST 127 = 2.4m, OPTIMAST 168/OPTIMAST 219/OPTIMAST 244 = 4.6m
5. SINGLE POST SIGN SUPPORTS MUST ONLY BE USED WHERE THE SIGN ATTACHMENT RESISTS ROTATION AND IS IN ACCORDANCE WITH STATE AUTHORITY GUIDELINES.

6. REFER TO THE OPTIMAST PRODUCT MANUAL FOR ADDITIONAL TECHNICAL INFORMATION.

OPTIMAST POSTS

No. OF POSTS

1	2	3	4	5
---	---	---	---	---



244

244

244

219

244

244

$H' (mm) = H + B/2$